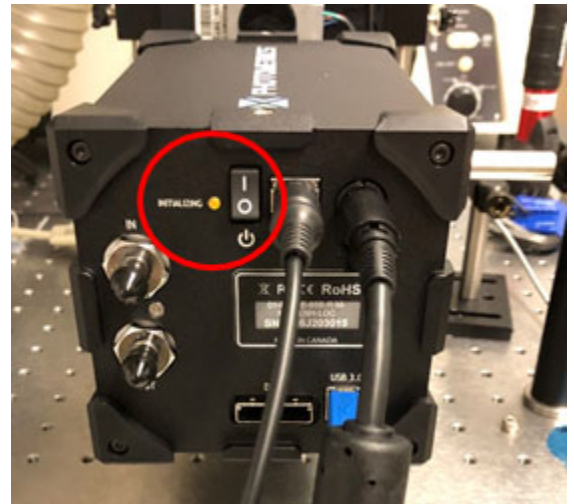


# How To Set-Up Nikon Elements In Your Windows Account For New Users Or After A Software Update

## Powering on the system:

- Turn on Master Power switch, press the shutter button on the SD, turn the key to the Laser launch, and if the power button on the EPI LED is not green turn it on.
- Before starting Elements make sure the initializing light is no longer blinking (red circle below) on the camera.
- Important Note: There is a white National Instruments box under the air table. This box has to be ON before the computer is started and never turned off unless the computer is **OFF**. If you need to power this device you must shut down the computer first.



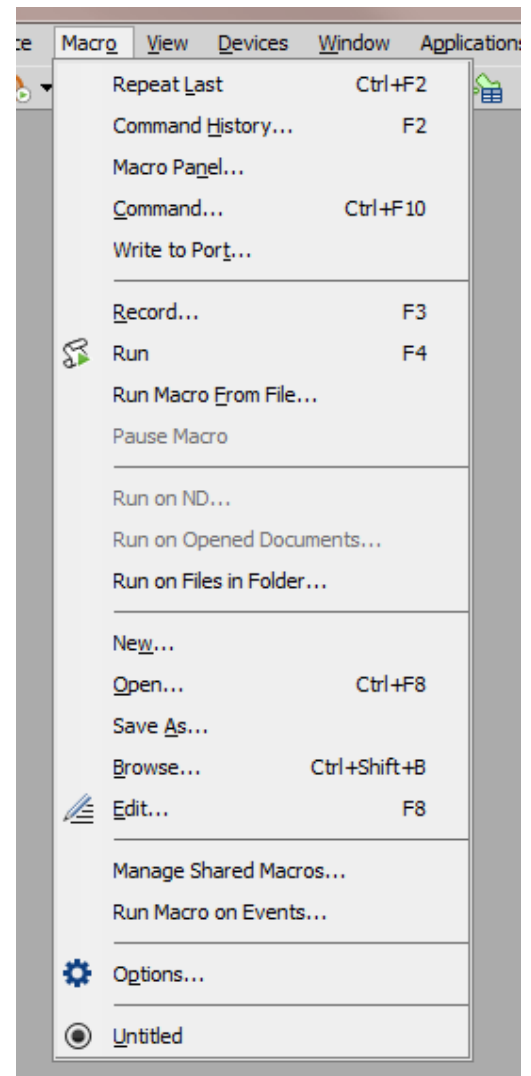
## The first time you start Elements:

1) At software start a window will open that asks for which camera you want to load. **Select Photometrics from the drop down list.** It should default to this selection after the first time. The camera tab should now have the Prime 95B name on it.

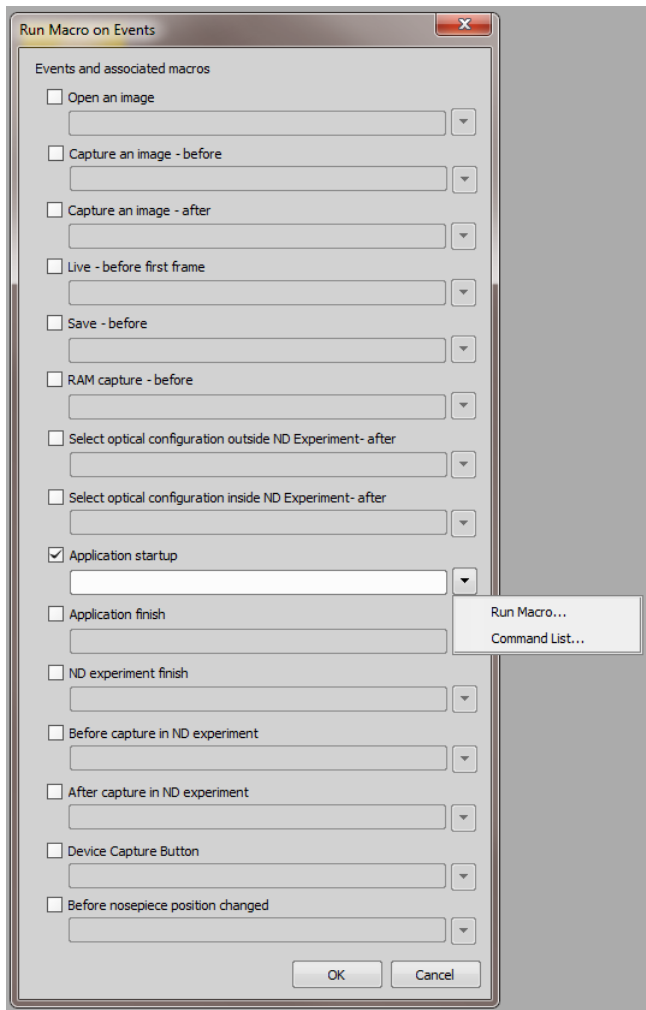
2) Go to Macro > Run Macro From File... and Select **C:\Configs\Elements Macros\setup\_macro.mac**. When it opens check the box for all occurrences and “important and replace”

3) Repeat and select **C:\Configs\Elements Macros\Prime95Bsetup.mac**

- This will load the layout and OCs with the first macro and set a camera ROI for the camera to cut off the unused part of the sensor with the second macro. You will end up with an image that is 802 x 802 pixels.
- If you ever need to reset the camera ROI just run second macro again: Go to Macro > Run Macro From File... and **Select C:\Configs\Elements Macros\Prime95Bsetup.mac**.



4) Go to Macro > Run Macro on Event and place a check mark next to Application startup. Click on the arrow next to the box and select Run Macro. Select C:\Configs\Elemnts Macros\Prime95Bsetup.mac. This will run the macro to set the camera ROI automatically when you start Elements in the future.



### Setting the mouse wheel to control the Piezo stage:

1) Go to Devices > Enable Mouse Joystick in Z in live