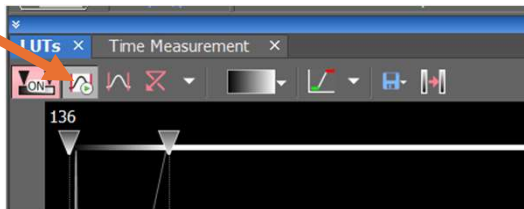


Setting up spinning disk and Channels- CREST specific

1. Turn on CREST like normal (follow directions on Desk)
2. Focus
 - On joystick press right on DISP button to see Objective height
 - On the screen next to the Z there though be 3 stacked ^ indicate course (fast) Z for focusing

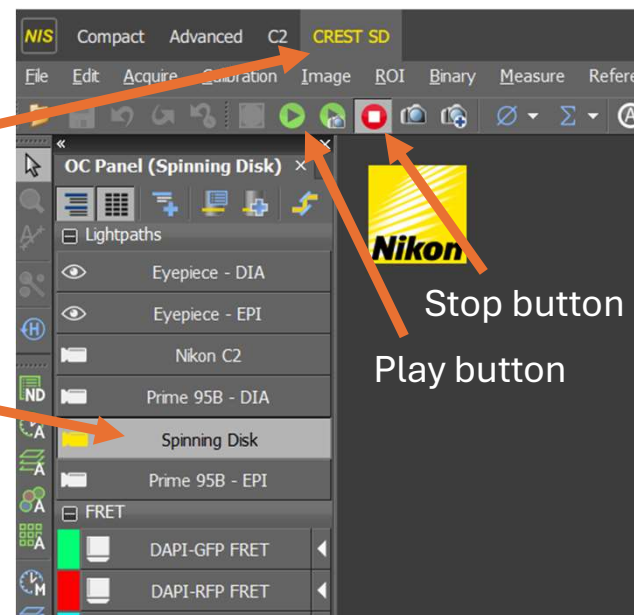
To set up spinning disk

1. Select "CREST SD" tab and "Spinning disk" Light Path
2. Select Channel(s)
 - Set up channels
 - When you first click play button it may be black!
 - Click the auto contrast button



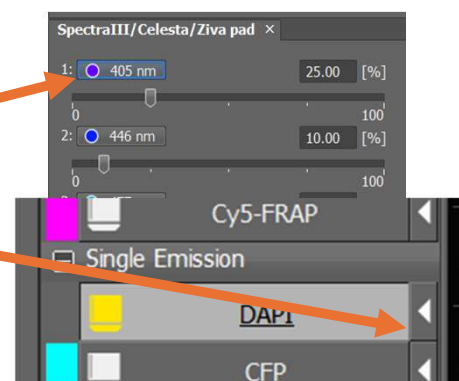
- Exposure times will be automatically remembered
- Laser powers –
 - Corresponding laser will be highlighted blue
 - **Need to click triangle on channel to force remember after setting power**

3. Set up ND-Acq to take images (see ND basics if you need more information) Remember, what ever is checked in ND-Acquisition will happen.



Notes:

- Any Channel under the spinning disk with "EPI" in the title is Epifluorescence with lasers!
- FRET = Cross Laser/filter excitation out of normal ranges (ie 405 laser with GFP filter)



Exposure time in Prime 95 Tab

