

Stage Position list and Grid Creator

Create multi point images for live imaging, or multi-point scanning; or use the tile creator to make a grid or an object that can be stitched

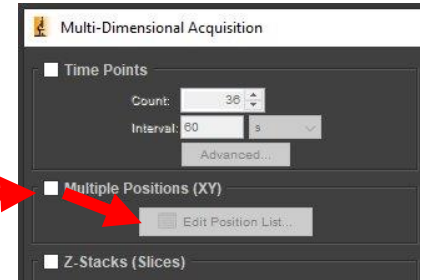


To Open

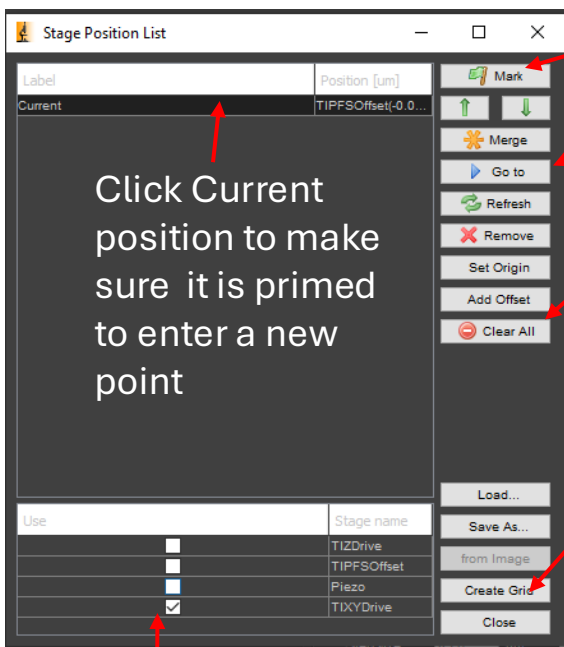
Click 4 arrows in cardinal directions below stage on main MM window

OR

In MDA window check "Multiple Position (XY)" then "Edit Position list"



Stage Position List



Mark a position

Go To a highlighted spot

Clear all remove all points **Do this before setting up a second GRID

Create Grid: Opens "Tile Creator"

Click Current position to make sure it is primed to enter a new point

BEFORE SETTING POINTS, CHECK WHAT WILL BE REMEMBERED- Multiple Z drives will confuse the machine.

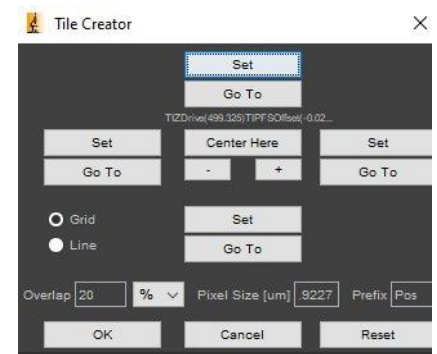
TiXYDrive=Always ON

TiZDrive – Remembers Objective position

TiPFSOffset – Can set different PFS height between points (useful for live cell multipoint)

TiPiezo – Remembers position of the Piezo stage (move sample not objective)

Tile Creator



First, set overlap between 10-20%

Can set ROI in 2 ways:

1. Click "+" or "-" "below "Center Here". When you have # x # and click "Center here, and it will make

OR

2. To set specific boundaries, travel around and click XY at the edges of your tissue/area you wish to scan