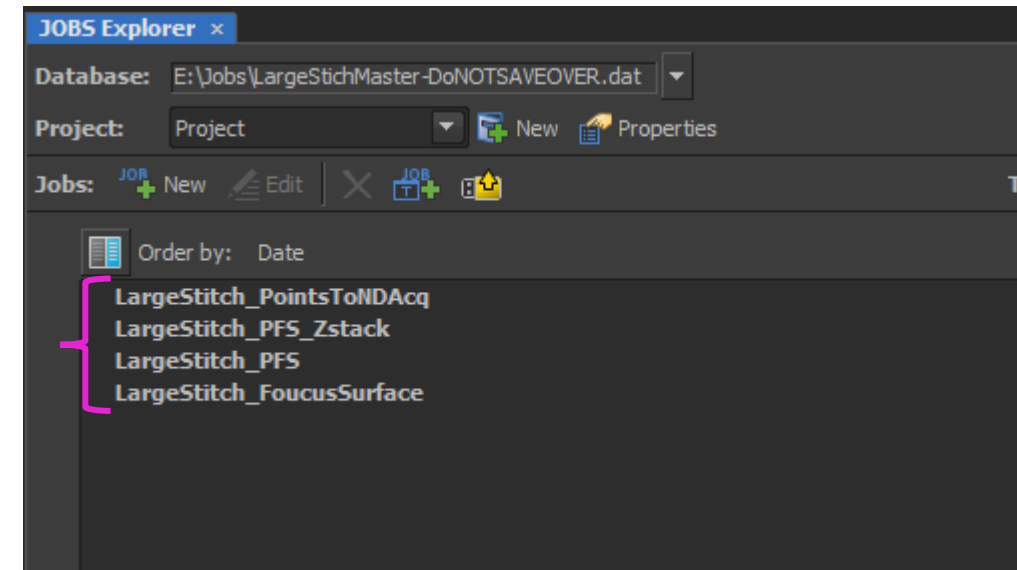
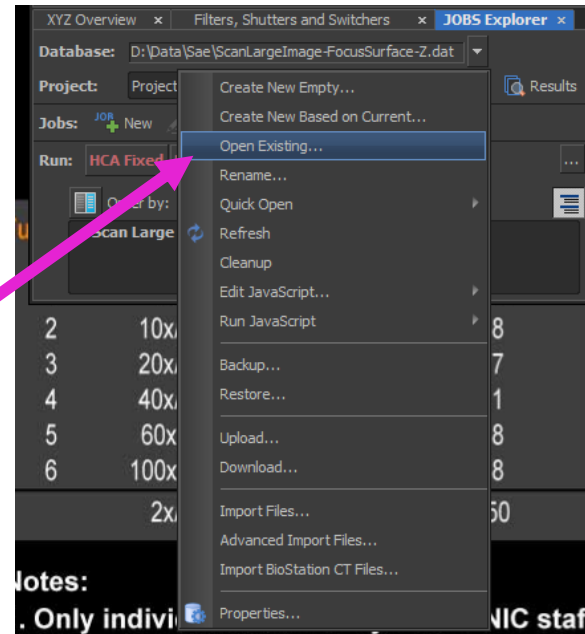
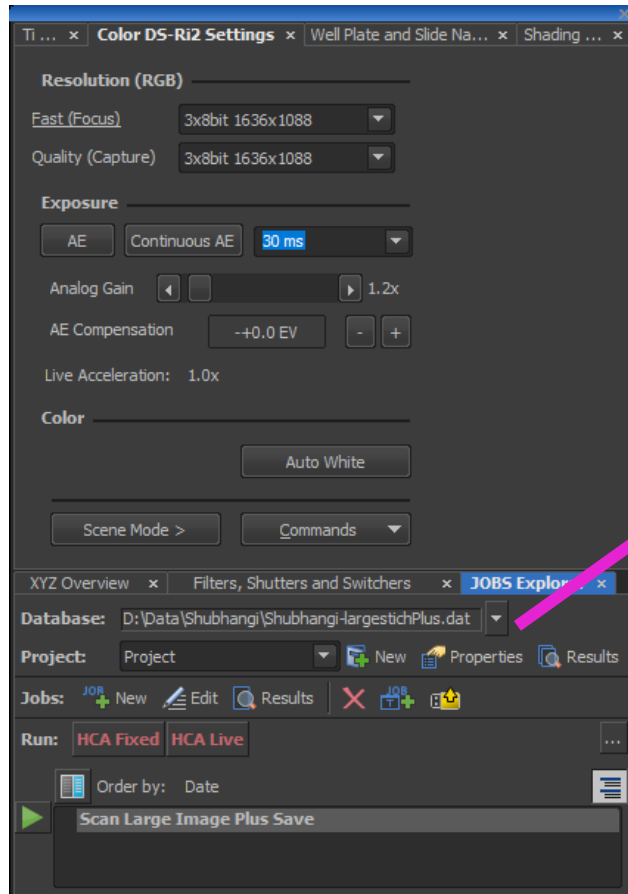


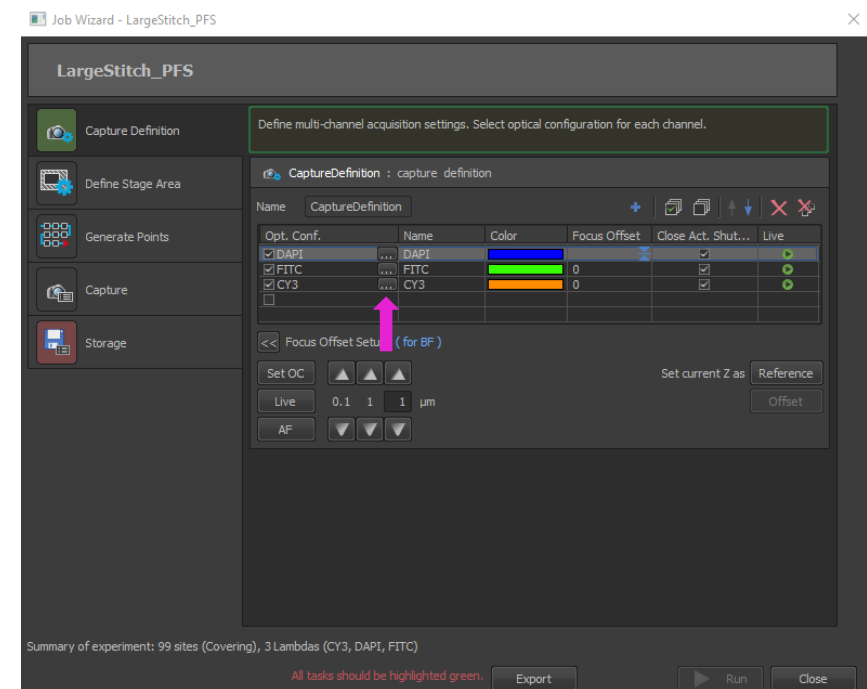
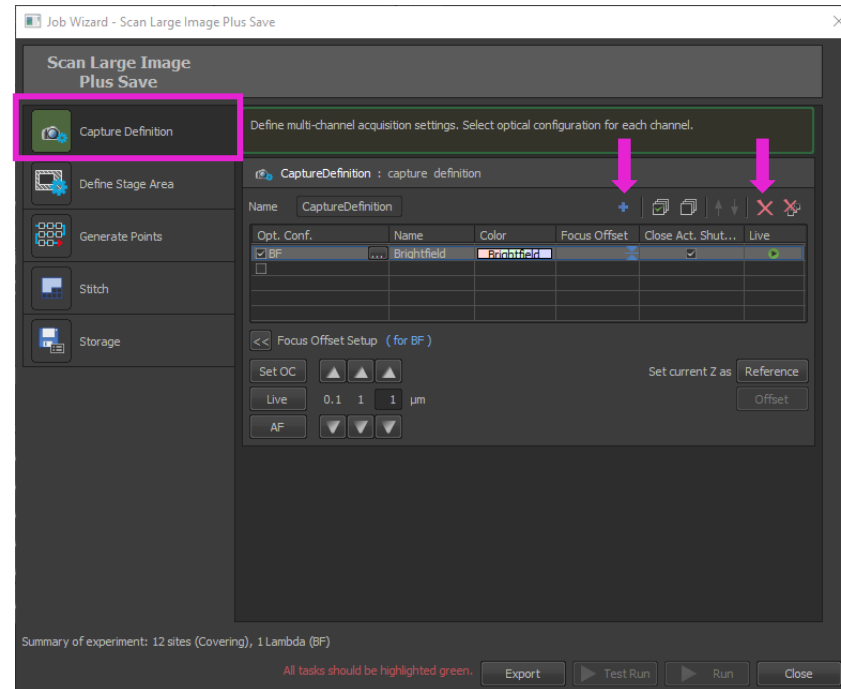
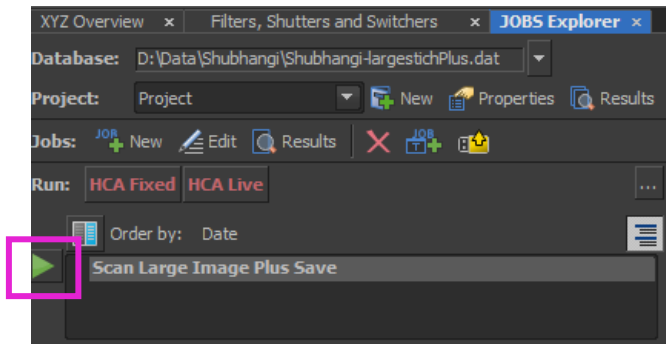
Take a stitched image using Jobs (for color or fluorescent imaging): Open the Job file

1. Go To JOBS Explorer tab
2. If needed under “Database” open the .dat file containing your stitching file by selecting ‘open existing’
3. If you do not have your own JOBS file, open the master stitch JOBS
4. File is under E:\Jobs\LargeStitchMaster-DONOTSAVEOVER.dat
5. Choose any of the LargeStitch options (can use with focus surface or with Z-stack)



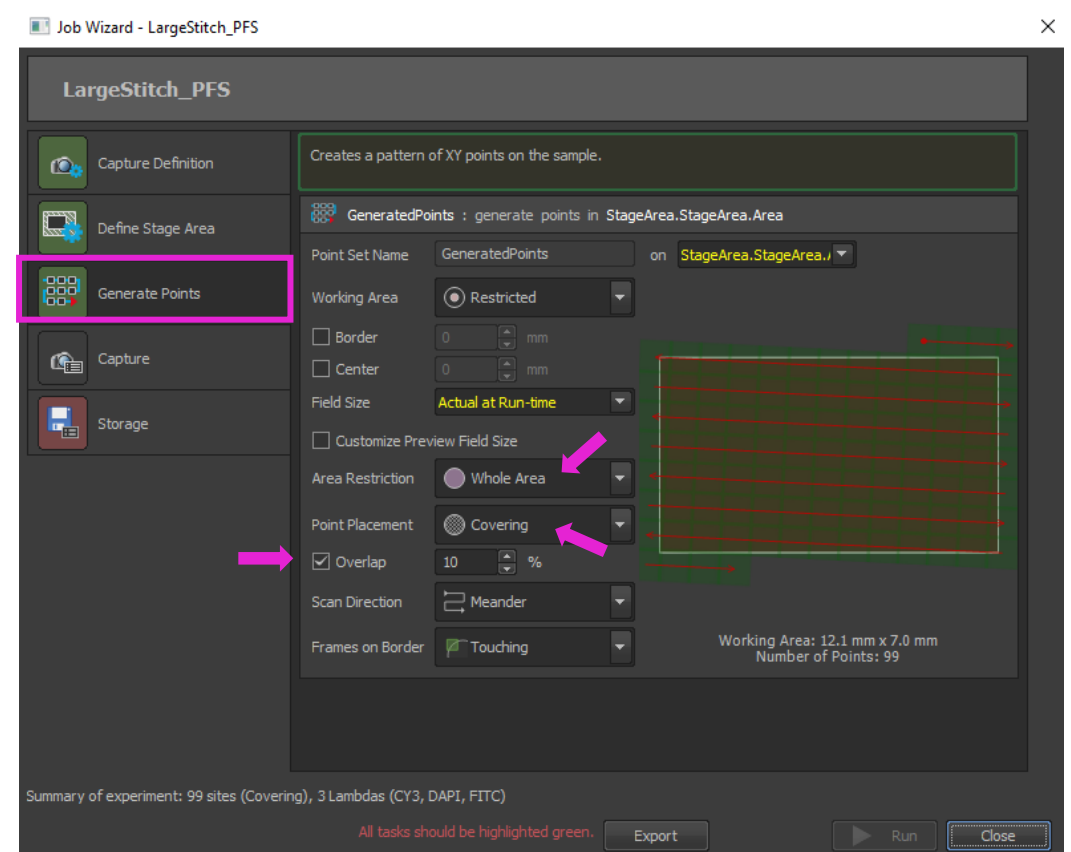
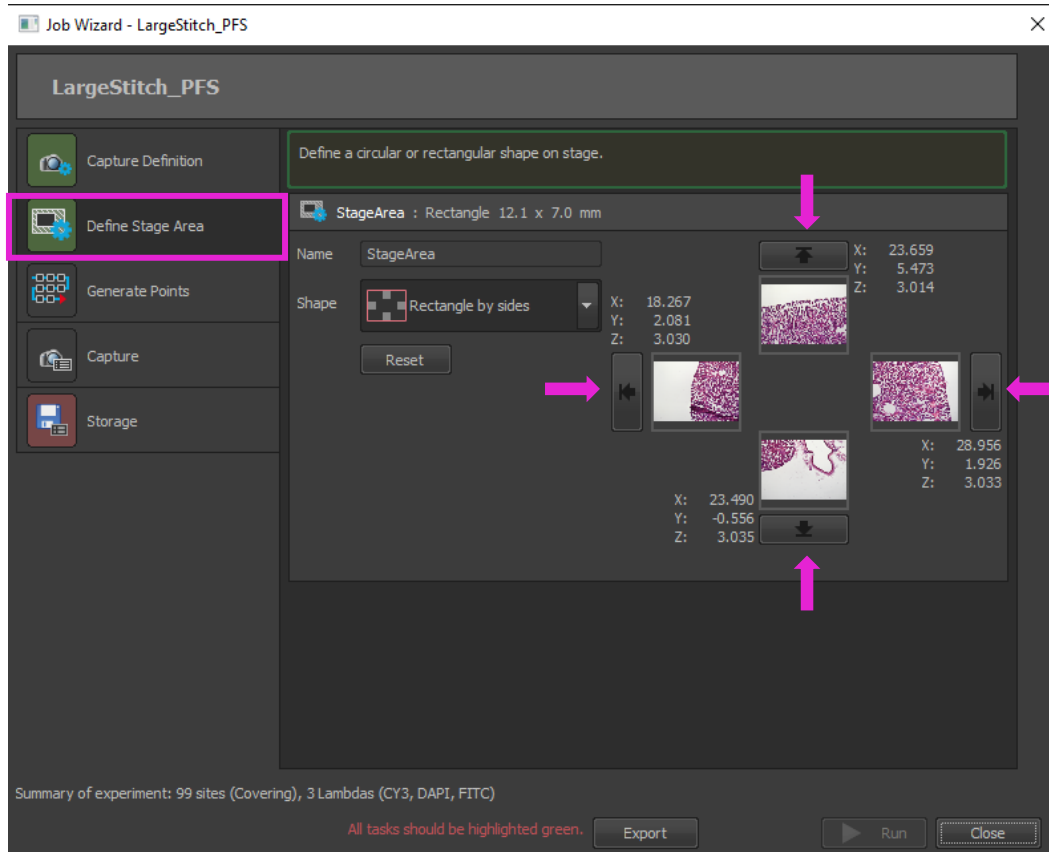
Take a stitched image using Jobs: Set up the Job

1. Click the Play button next to the job (the job has to be highlighted to see the play button)
2. This will open the job window
3. In the 'Capture Definition' tab, select the channels you want to image (BF, DAPI, FITC, CY3, CY5, etc.)
 - To add or remove channels, click the '+' or red 'X'
 - You can change the channel by clicking the '...'



Take a stitched image using Jobs: Set up the Job

1. In 'Define Stage Area' tab, go to the furthest points of the tissue and click the corresponding arrow to mark the point
 - TIP: Not sure where the further point is? Look at the slide on the microscope!
 - If you move to a lower magnification to set points, make sure to change back to the objective you will be using to image!
2. In the 'Generate points' tab, you will see a rectangle covered by green boxes. Each green box is an image that will be taken. You can use this to check if the area looks to be about the right size.
 - Make sure 'Whole Area' and 'Covering' are selected
 - You can change the % overlap (typically between 10-30%)



Take a stitched image using Jobs: Set up the Job

1. Click the 'Capture' tab
 - You do not need to change anything here, but you must click on each tab on the left side bar for the job to run
2. Under the 'Storage' tab, change the file name and the folder you want to save to by clicking the '...'
3. This will save one file for you:
 - Your image with all the positions not stitched (these will be named "filename.nd2")
4. Click 'Run' to start the JOBS and acquire the tiled image
5. YOU MUST STITCH IMAGES SEPARATELY
 - Open the saved image you just captured from your folder
 - In the Macro Panel, click 'Stitch Color BF' for color images, or 'Stitch Fluorescence' for fluorescent images

