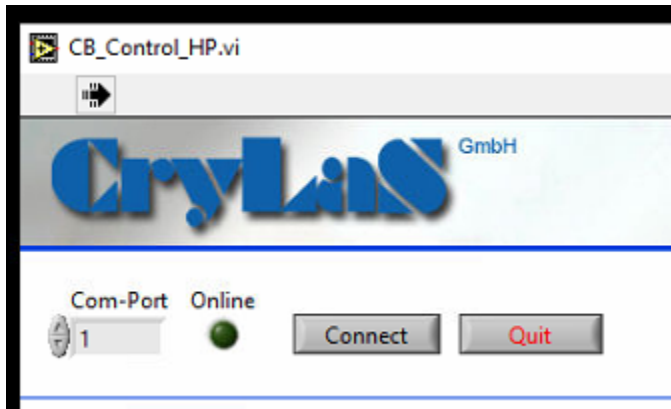
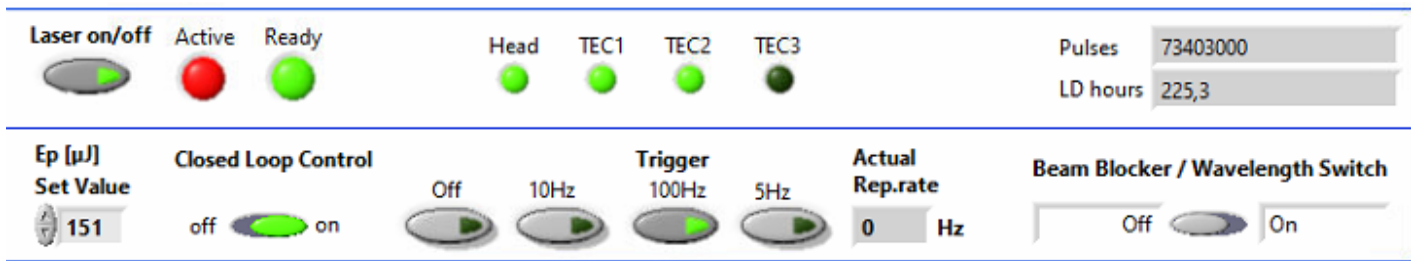


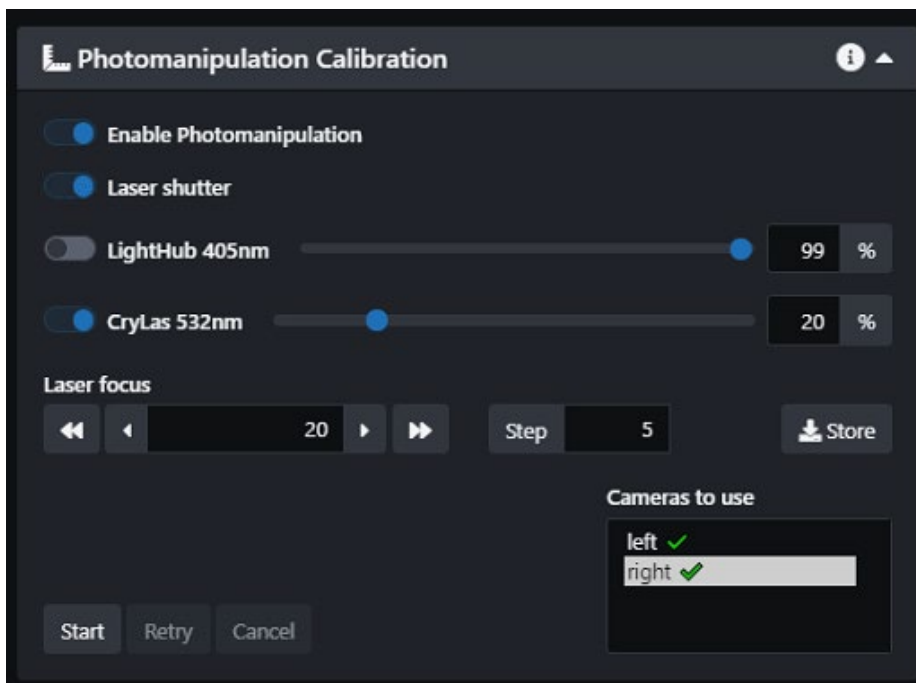
1. Place the lid on the chamber and press the interlock button
2. Open new crylas software ("C:\Program Files (x86)\CB_Control_HP\CB_Control_HP.exe")
3. Press "connect" at the top



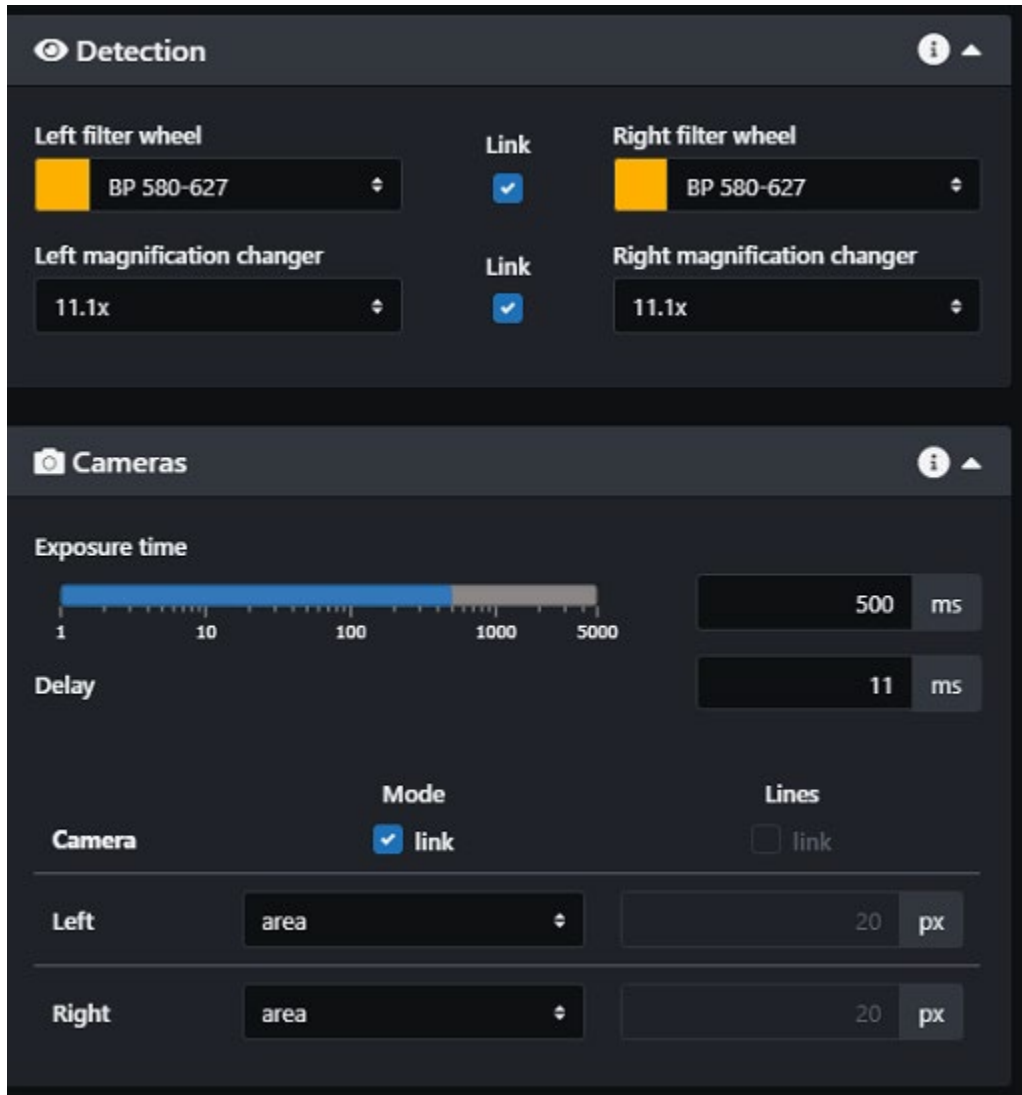
4. Turn "Closed Loop Control" on
5. Set trigger rate to 100Hz
6. Turn laser "On"



7. Enable Photomanipulation in Calibration tab
8. Turn on shutter
9. Turn on Crylas 532nm laser
10. Set laser to 20%



11. Set camera to area mode
12. Set exposure to 500ms
13. Select BP580-627 filter



14. Go live
15. Select right camera and begin calibration